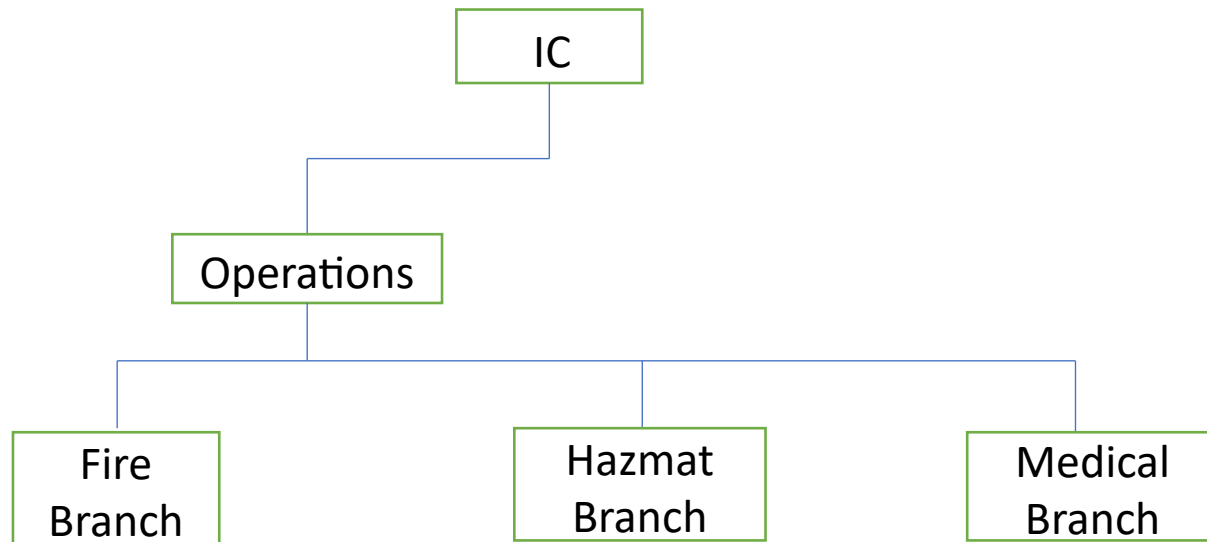


# Planning the Response

Brad Banz

Retired, Colwich Fire Dept, Retired Wichita Fire Department

# ICS



# Gather Information

- Product information
  - Properties
  - ERG, SDS information
- Size of spill
- Fire
- Container
- Victims
- PPE
- Resources
- Weather
- Surrounding community, topography
- Utilities

# Evaluate Information & Develop a Plan

- Life safety above all else, responder life safety first
- Implement ICS
- Use risk assessment model
- Use product, spill size, topography, and capabilities of PPE and equipment to help determine the level of your response.
- Determine outside resources you have available (other fire, EMS, experts, police). Call help as appropriate
- Isolation of an area may be the only option

# Risk Assessment

- Risk assessment model

		1 (Minor)	2 (Moderate)	3 (Major)	4 (Maximal)
		First aid case; exposure to minor health risk; little to no economic costs incurred.	Medical treatment; lost time injury; reversible impact on health; exposure to major health risk; economic costs are low.	Loss of quality of life; irreversible health impact; economic costs are moderate.	Single/Multiple fatalities; health impact is ultimately fatal; economic costs are high.
Likelihood		Risk Ranking			
4 (Almost Certain)	The incident occurs with regularity and will continue to occur (>75% likelihood)	7 (M)	11 (H)	14 (EX)	16 (EX)
3 (Likely)	The incident has occurred frequently, and is expected to occur (30-75% likelihood)	4 (L)	8 (M)	12 (H)	15 (EX)
2 (Possible)	The incident has happened at some time (infrequently), and will occur under some circumstances (10-30% likelihood)	2 (L)	5 (M)	9 (M)	13 (H)
1 (Unlikely)	The incident has happened in the past (rarely), and may occur in exceptional circumstances	1 (L)	3 (L)	6 (M)	10 (H)

# Implement your plan

- Initiate the response plan
- Monitor the progress of the response
- Be ready to make changes as needed



# Gather Feedback

- Observe progress of incident
- Observe safety
- Evaluate for any changes that need to be made
- Make changes to plan as necessary
- The incident in bottom photo, notes a change in plan. Overpack drum is to be used instead tightening lid

