

## CHAPTER 5


### Incident Command System

Copyright © 2014 Jones & Bartlett Learning, LLC, an Ascend Learning Company and the National Fire Protection Association

## Fire Fighter II Objectives

FFII

- Describe the characteristics of the Incident Command System (ICS).
- Explain the organization of the ICS.
- Function within an assigned role within the ICS.




Copyright © 2014 Jones & Bartlett Learning, LLC, an Ascend Learning Company and the National Fire Protection Association

## Fire Fighter II Objectives

FFII

- Organize and coordinate an ICS until command is transferred.
- Transfer command within an ICS.

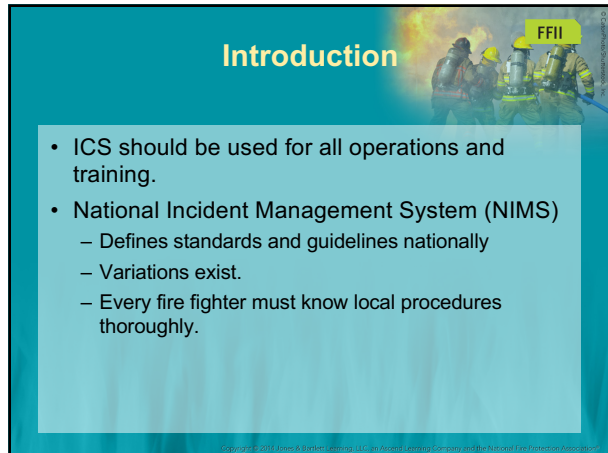


Copyright © 2014 Jones & Bartlett Learning, LLC, an Ascend Learning Company and the National Fire Protection Association

## Introduction

FFII

- ICS should be used for all operations and training.
- National Incident Management System (NIMS)
  - Defines standards and guidelines nationally
  - Variations exist.
  - Every fire fighter must know local procedures thoroughly.

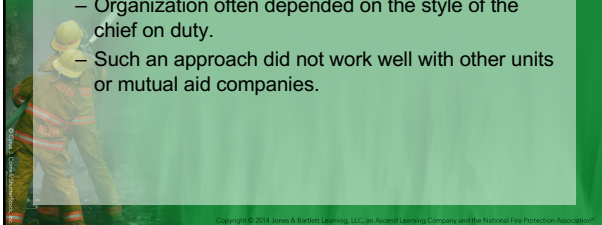


Copyright © 2014 Jones & Bartlett Learning, LLC, an Ascend Learning Company and the National Fire Protection Association

## History of ICS

FFII

- Pre-1970s
  - Every fire department had its own methods of incident management.
  - Organization often depended on the style of the chief on duty.
  - Such an approach did not work well with other units or mutual aid companies.


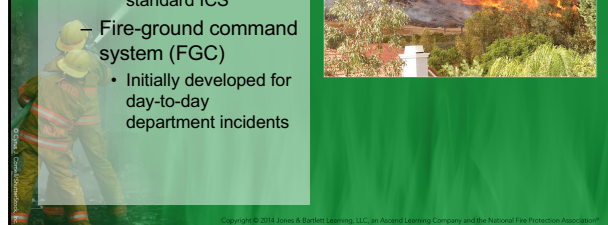


Copyright © 2014 Jones & Bartlett Learning, LLC, an Ascend Learning Company and the National Fire Protection Association

## History of ICS

FFII

- 1970s
  - FIRESCOPE
    - Developed first standard ICS
  - Fire-ground command system (FGC)
    - Initially developed for day-to-day department incidents

Copyright © 2014 Jones & Bartlett Learning, LLC, an Ascend Learning Company and the National Fire Protection Association

## History of ICS

FFII

- 1980s
  - FIRESCOPE ICS adopted by all federal and most state wildland firefighting agencies
  - Several federal regulations and consensus standards adopted
- Present
  - ICS is best of ICS and FGC.

## Characteristics of the ICS

FFII

- Recognized jurisdictional authority
- Applicable to all risk and hazard situations
- Applicable to day-to-day operations
- Unity of command
- Span of control
- Modular organization

## Characteristics of the ICS

FFII

- Common terms
- Integrated communications
- Consolidated incident action plans
- Designated incident facilities
- Resource management

## Jurisdictional Authority

FFII

- Identification at smaller incidents is usually not a problem.
- Unified command used when there are overlapping responsibilities
- Single command
- Incident action plan (IAP)

## All-Risk/All-Hazard System

FFII

- ICS works equally well at all types of incidents.
  - Emergencies
  - Nonemergency events




## Everyday Applicability

FFII

- ICS can be used for everyday operations.
- Regular use of ICS builds familiarity with procedures and terms.





## Unity of Command

FFII

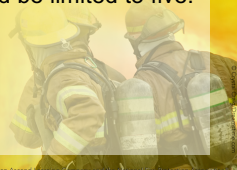
- Each person has only one supervisor.
- All orders and assignments come from that supervisor.
- Best qualified person should be assigned at the appropriate level.

Copyright © 2014 Jones & Bartlett Learning, LLC, an Ascend Learning Company and the National Fire Protection Association

## Span of Control

FFII

- The maximum number of subordinates a supervisor can have
- In most situations, three to seven is the most one person can manage.
- In ICS, span of control should be limited to five.




Copyright © 2014 Jones & Bartlett Learning, LLC, an Ascend Learning Company and the National Fire Protection Association

## Modular Organization

FFII

- ICS is designed to be flexible and modular.
- Not every component must be used.
- Additional components can be added as needed.




Copyright © 2014 Jones & Bartlett Learning, LLC, an Ascend Learning Company and the National Fire Protection Association

## Common Terms

FFII

- Terms are common and consistent within and among agencies in the ICS.
- Common terms eliminate confusion.
  - Each word has a single definition.
  - No two words mean the same thing.



Copyright © 2014 Jones & Bartlett Learning, LLC, an Ascend Learning Company and the National Fire Protection Association

## Integrated Communications

FFII

- Communications supported up and down the chain of command
- Messages must move efficiently through the system.




Copyright © 2014 Jones & Bartlett Learning, LLC, an Ascend Learning Company and the National Fire Protection Association

## Consolidated Incident Action Plans

FFII

- Everyone follows one overall plan.
- May be developed by the incident commander alone at small incidents
- Developed in collaboration with all agencies involved on larger incidents



Copyright © 2014 Jones & Bartlett Learning, LLC, an Ascend Learning Company and the National Fire Protection Association

## Designated Incident Facilities

FFII

- Assigned locations
  - Incident command post
  - Rehabilitation sector
  - Casualty collection point
  - Treatment area
  - Base of operations
  - Helispot

## Resource Management

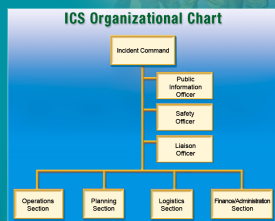
FFII

- Standard system of assigning and tracking resources involved on the incident
- Staging area
  - Large-scale incidents
  - Close to incident
  - Units held in reserve
- Personnel are the most vital resource

## The ICS Organization

FFII

- Positions are staffed as needed.
- IC position must be filled at every incident.



## Command

FFII

- The incident commander is ultimately responsible for managing the incident.
- Command is established when the first unit arrives on the scene as is maintained until the last unit leaves the scene.

## Unified Command

FFII

- Used when agencies overlap
- Representatives from each agency cooperate to share command authority.



## Incident Command Post

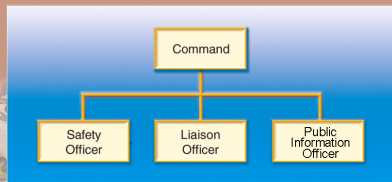
FFII

- Headquarters location for the incident
- Should be in a nearby, protected location
  - Enables command staff to function without distractions or interruptions

## Command Staff

FFII

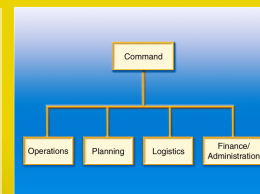
- Safety officer
- Liaison officer
- Public information officer



## General Staff Functions

FFII

- Four section chiefs for the major ICS components:
  - Operations
  - Planning
  - Logistics
  - Finance/ administration



## Operations

FFII

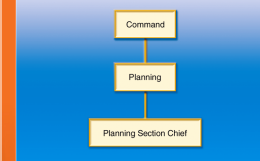
- Responsible for all actions that are directly related to controlling the incident
  - Fire suppression
  - Rescue
  - Emergency medical services
  - Conducted in accordance with an IAP

## Planning

FFII

- Responsible for the collection, evaluation, and dissemination of information relevant to the incident
- Also responsible for developing and updating the IAP

### The Planning Section of ICS

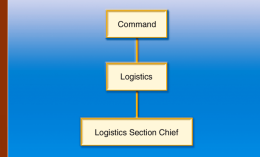


## Logistics

FFII

- Responsible for providing supplies, services, facilities, and materials during the incident

### The Logistics Section of ICS



## Finance/Administration

FFII

- Responsible for accounting and financial aspects of an incident
- Responsible for any legal issues that may arise
- Not staffed at most incidents


### The Finance/Administration Section of ICS



## Standard ICS Concepts and Terms

FFII


- One of the strengths of the ICS is its use of standard terms.
  - Specific terms apply to various parts of an incident organization.
  - Understanding these basic terms is the first step in understanding the system.



## Single Resources and Crews

FFII

- Single resource
  - A vehicle and its assigned personnel
- Crew
  - Groups of fire fighters working without apparatus



## Divisions and Groups

FFII


- Division
  - Geographic
- Group
  - Functional



## Branches

FFII

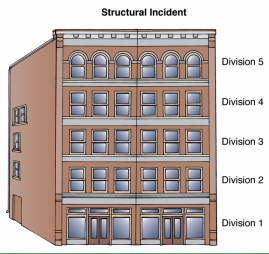
- Higher level of combined resources working on a particular aspect of the overall emergency
- A branch director can oversee several divisions and/or groups.



## Location Designators

FFII


- Identify different parts of a fire scene
  - Sides
  - Exposures
  - Floors



## Task Forces and Strike Teams


FFII

- Groups of single resources assigned to work together
- Task force
  - Up to five single resources of any type

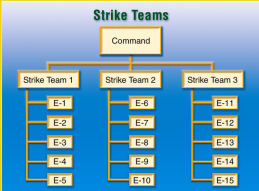


## Task Forces and Strike Teams FFII

- Strike team
  - Five units of the same type working on a common task or function



### Strike Teams



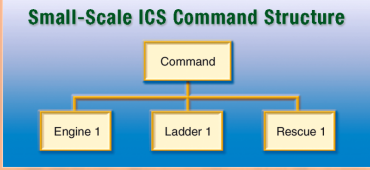
```

graph TD
    Command[Command] --> ST1[Strike Team 1]
    Command --> ST2[Strike Team 2]
    Command --> ST3[Strike Team 3]
    ST1 --> E11[E-1]
    ST1 --> E12[E-2]
    ST1 --> E13[E-3]
    ST1 --> E14[E-4]
    ST1 --> E15[E-5]
    ST2 --> E21[E-6]
    ST2 --> E22[E-7]
    ST2 --> E23[E-8]
    ST2 --> E24[E-9]
    ST2 --> E25[E-10]
    ST3 --> E31[E-11]
    ST3 --> E32[E-12]
    ST3 --> E33[E-13]
    ST3 --> E34[E-14]
    ST3 --> E35[E-15]
  
```

## Implementing ICS FFII

- Modular design allows organization to expand based on needs.
- Tasks are defined in advance.

### Small-Scale ICS Command Structure




```

graph TD
    Command[Command] --> Engine1[Engine 1]
    Command --> Ladder1[Ladder 1]
    Command --> Rescue1[Rescue 1]
  
```

## Implementing ICS FFII

- Most frequently used components:
  - Divisions
  - Groups

### Divisions and Groups



```

graph TD
    Command[Command] --> SO[Safety Officer]
    Command --> LO[Liaison Officer]
    Command --> DivI[Division I]
    Command --> DivII[Division II]
    DivI --> VG1[Ventilation Group]
    DivI --> RG1[Rescue Group]
    DivII --> VG2[Ventilation Group]
    DivII --> RG2[Rescue Group]
  
```

## Standard Position Titles FFII

- Clarify roles within the ICS organization
- Title includes functional/geographic area, followed by designator.

## Standard Position Titles FFII

TABLE 5-1 Levels of an ICS Organization		
ICS Level	ICS Function/Location	Position Designator
Command	Command and control	Incident Commander
Command staff	Safety, liaison, information	Officer
General staff	Operations, Planning, Logistics, Finance/Administration	Section Chief
Branch	Varies (e.g., EMS)	Director
Division/group	Varies (e.g., Division A)	Supervisor
Unit/crew/strike	Varies (e.g., Rehab)	Leader
Team/task force		(Company officer)

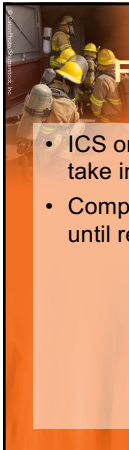
## Working Within the ICS FFII

- Every fire fighter must understand the ICS and his or her role within it.
- Three basic components:
  - Someone is in command of every incident.
  - You always report to one supervisor.
  - The company officer reports to the incident commander.

## Responsibilities of First-Arriving Fire Fighters

FFII

- ICS organization is built around the units that take initial action.
- Company officers need to assume command until relieved by a higher-ranking officer.

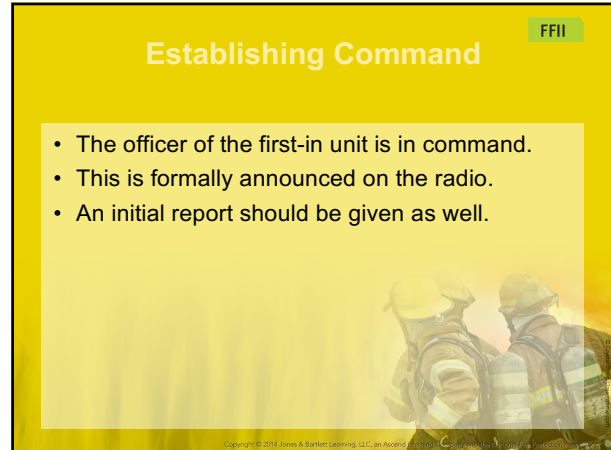


Copyright © 2014 Jones & Bartlett Learning, LLC, an Ascend Learning Company and the National Fire Protection Association

## Establishing Command

FFII

- The officer of the first-in unit is in command.
- This is formally announced on the radio.
- An initial report should be given as well.

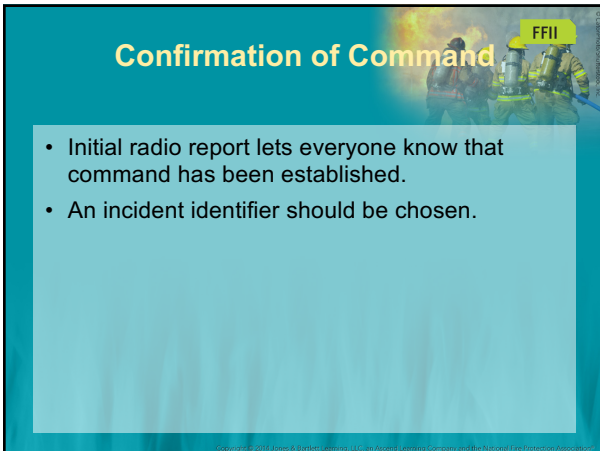


Copyright © 2014 Jones & Bartlett Learning, LLC, an Ascend Learning Company and the National Fire Protection Association

## Confirmation of Command

FFII

- Initial radio report lets everyone know that command has been established.
- An incident identifier should be chosen.

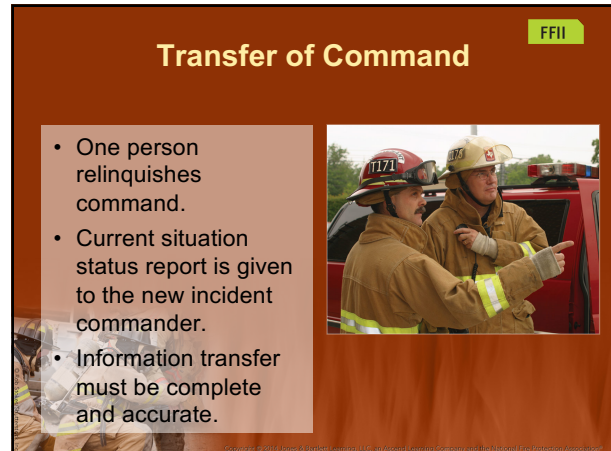


Copyright © 2014 Jones & Bartlett Learning, LLC, an Ascend Learning Company and the National Fire Protection Association

## Transfer of Command

FFII

- One person relinquishes command.
- Current situation status report is given to the new incident commander.
- Information transfer must be complete and accurate.

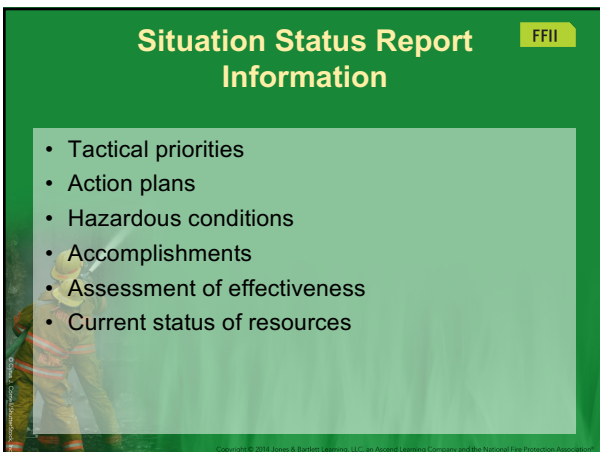


Copyright © 2014 Jones & Bartlett Learning, LLC, an Ascend Learning Company and the National Fire Protection Association

## Situation Status Report Information

FFII

- Tactical priorities
- Action plans
- Hazardous conditions
- Accomplishments
- Assessment of effectiveness
- Current status of resources

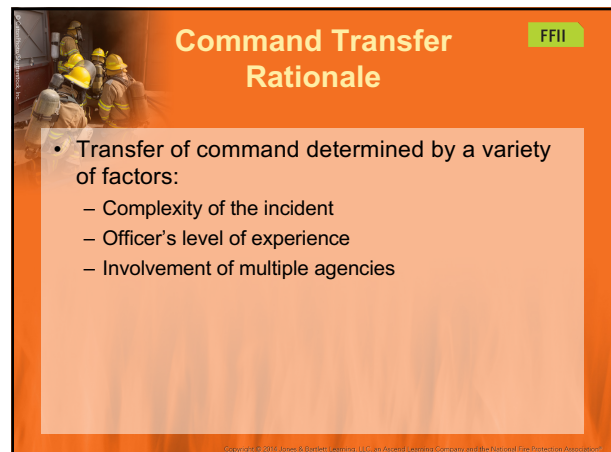


Copyright © 2014 Jones & Bartlett Learning, LLC, an Ascend Learning Company and the National Fire Protection Association

## Command Transfer Rationale

FFII

- Transfer of command determined by a variety of factors:
  - Complexity of the incident
  - Officer's level of experience
  - Involvement of multiple agencies



Copyright © 2014 Jones & Bartlett Learning, LLC, an Ascend Learning Company and the National Fire Protection Association



## Summary

FFII

- ICS provides a standard, professional, and organized approach to managing emergency incidents.
- All emergency operations and training exercises should be run using ICS.
- All functions in the ICS must be addressed at every incident.

## Summary

FFII

- On smaller incidents, this may only require one person to handle all functions.
- The incident commander has ultimate responsibility to manage the incident.
- All fire fighters must understand the ICS and what their role in an ICS is.